

There is no power greater than a community discovering what it cares about.

Margaret Mead.

Alone we can do so little; Together, we can do so much.

Hellen Keller

The greatness of a community is most accurately measured by the  
compassionate action of its members.

Coretta Scott King

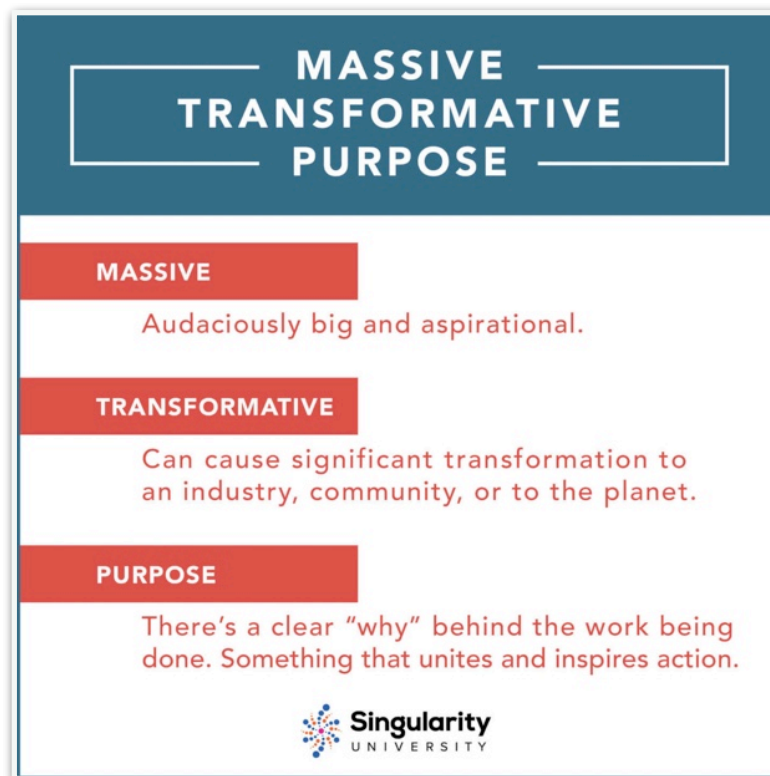
**Ponder the quotes above in light of Aldea's mission. Can you envision a future where people from across our country (and beyond) are moving as one in their exploration of wisdom and their compassionate action?**

## Be a Part of the Movement

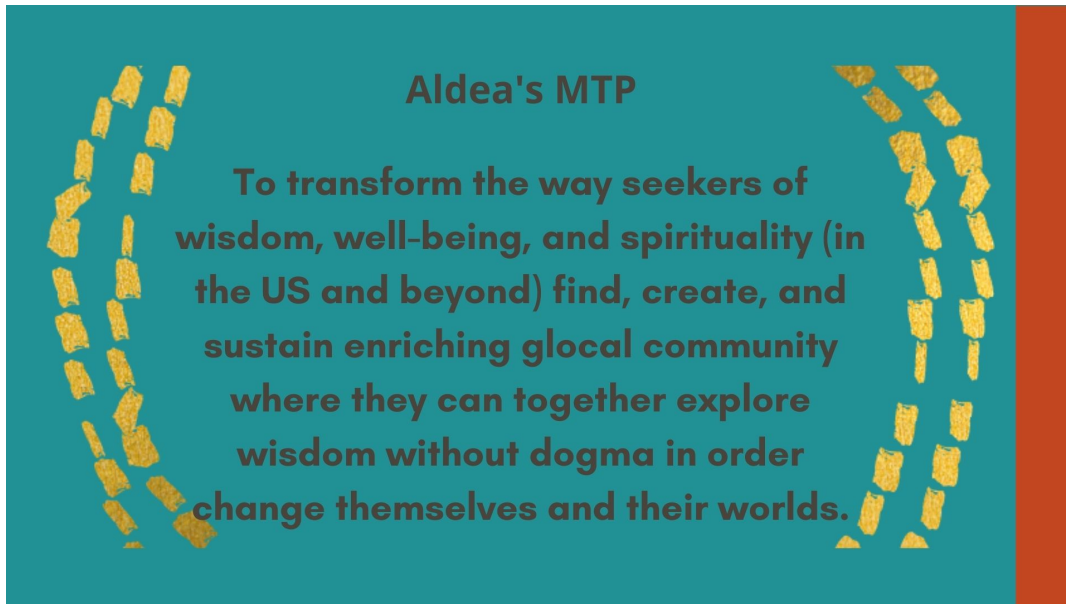
Have you watched Eric Whitacre's, *Sing Gently as One*? If not, take a moment now to do so. Let the power of the music and the visual move you, inspire you, energize you. You can find the link to *Sing Gently as One*, and other virtual choirs, on the page where you downloaded the reflective guide.

*Sing Gently as One* reveals the power of connection. The world changes for the better, when individuals find each other, become friends, and then do something meaningful together.

Consider This: It's a compelling and life-changing purpose separates a club from a mission-driven community. Club members enjoy the benefits that a club can provide them. And they connect with others who are part of the club. Mission-driven community members want to share the benefits with others. They enjoy the mission benefits, but it doesn't stop there. **They, together, work to actualize their massive transformative purpose. For reference, here are the elements of an MTP.**

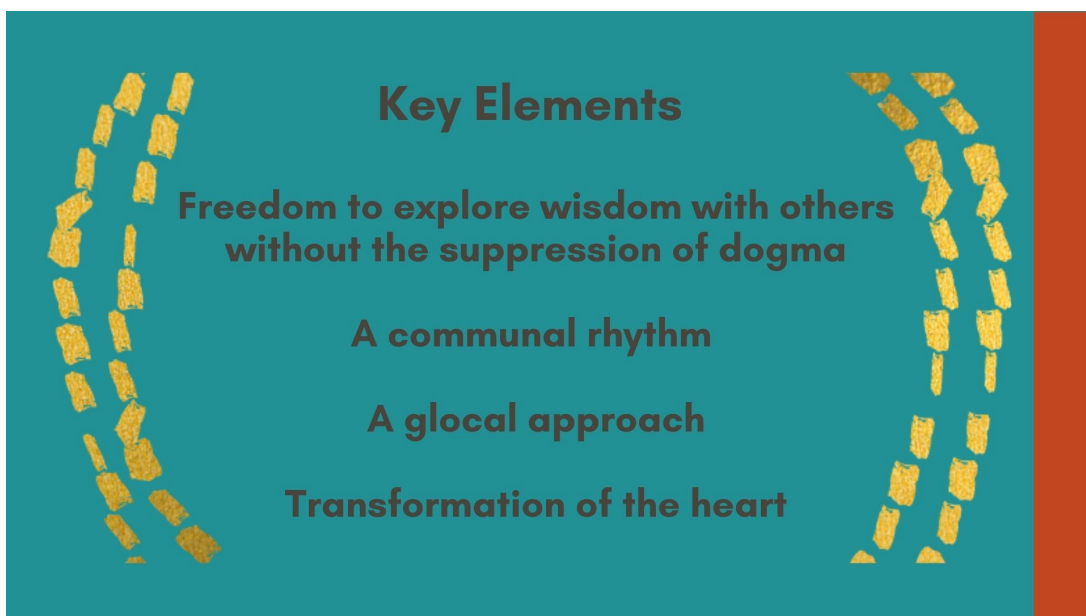


Discuss (see below) Aldea's massive transformative purpose and key elements. Talk about the various elements of the purpose and how you could be involved in growing this important community. Can you envision this purpose? Can you join the movement?

A teal rectangular graphic with a vertical orange bar on the right side. The text is centered and framed by two curved, dashed lines made of small gold squares. The text reads: "Aldea's MTP To transform the way seekers of wisdom, well-being, and spirituality (in the US and beyond) find, create, and sustain enriching glocal community where they can together explore wisdom without dogma in order change themselves and their worlds."/>

**Aldea's MTP**

To transform the way seekers of wisdom, well-being, and spirituality (in the US and beyond) find, create, and sustain enriching glocal community where they can together explore wisdom without dogma in order change themselves and their worlds.

A teal rectangular graphic with a vertical orange bar on the right side. The text is centered and framed by two curved, dashed lines made of small gold squares. The text lists four key elements: "Key Elements Freedom to explore wisdom with others without the suppression of dogma A communal rhythm A glocal approach Transformation of the heart"./>

**Key Elements**

Freedom to explore wisdom with others without the suppression of dogma

A communal rhythm

A glocal approach

Transformation of the heart

## What Can You Do?

The future of Aldea is created when we participate in the MTP. What on the list below (or other actions) can you do to join and spread the movement.

Remember, the virtual choir movement started with one person!

- Share a podcast with friends you think would find it meaningful (send them the link)
- Invite them to a conversation about a particular podcast (“hey watch this and then let’s talk about it”)
- Encourage friends to gather their and discuss the podcasts
- Share the MTP of Aldea with others
- Share the reflective guide and podcast with people you know who are interested in exploring spirituality, wisdom, science, and all things related to living a meaning-filled life.
- Join the community hub and invite others to do the same. We’ve created a free community hub where members and friends can learn what’s happening at Aldea, continue important conversations, and get to know each other. You can join by clicking [HERE](#).
- Rinse and repeat. This takes time, love, and intention.

[Join the Chorus; Join the Movement](#)